



# METEOR TS900V-(W)

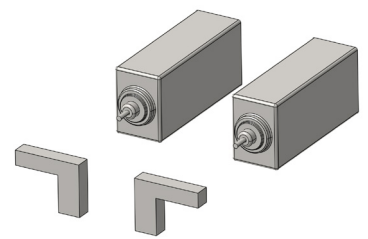
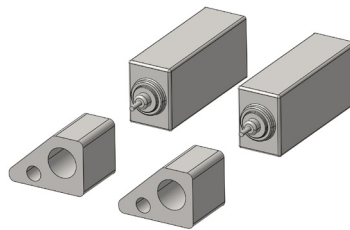
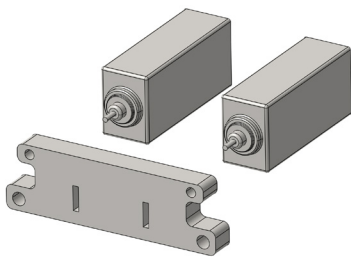
## METEOR TS900V

### flexible twin spindle machine with adjustable spindle distance

The machining center METEOR TS900 is designed for the highest requirement of high performance production lines and is available in 4 or 5 axes, with HSK100 or HSK63. The spindles flexibility offers number of possibility:

*simultaneous machining  
on the same large part*

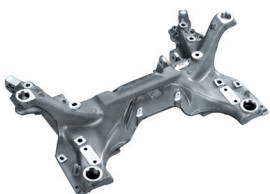
*simultaneous machining with the two spindles:  
- on the same part  
- on two symmetrical parts*

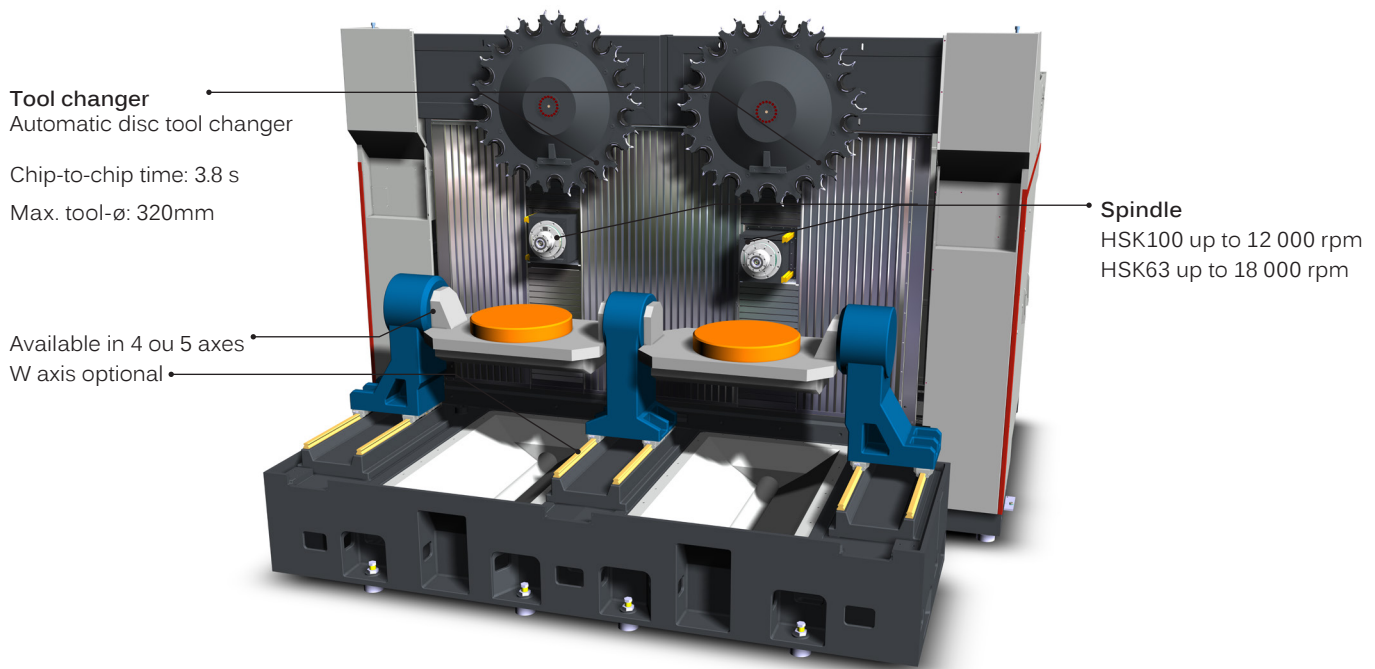


### YOUR ADVANTAGES

- + Maximum flexibility thanks to 2 independent spindles
- + Specially developed for aluminum and cast iron processing
- + Targeted for large size and structure parts
- + Green manufacturing solution to reduce your energy cost

### TYPICAL PARTS





|                            |                        | METEOR TS900V      | METEOR TS900V-W    |                  |
|----------------------------|------------------------|--------------------|--------------------|------------------|
| <b>Number of axes</b>      | number of axes         | 4 (optional 5)     | 4 (optional 5)     |                  |
| <b>Spindles</b>            | number of spindles     | 2                  | 2                  | piece            |
| <b>Working range</b>       | X-axis                 | 900 - 1 800        | 900 - 1 800        | mm               |
|                            | Y-axis                 | 800                | 800                | mm               |
|                            | Z-axis                 | 630                | 630                | mm               |
|                            | W-axis                 |                    | 630                | mm               |
| <b>Max. part size</b>      | X/Y/Z/W                | ø 1 200 x 2 715    | ø 1 200 x 2 715    | mm               |
| <b>Feed rate</b>           | acceleration (X/Y/Z/W) | 6/10/15            | 6/10/15/5          | m/s <sup>2</sup> |
|                            | max. speed (X/Y/Z/W)   | 70/60/80           | 70/60/80/80        | m/min            |
| <b>Spindle</b>             | speed*                 | 0-12 000           | 0-12 000           | rpm              |
|                            | power (S1/S6)*         | 42/65              | 42/65              | kW               |
|                            | torque (S1/S6)*        | 200/320            | 200/320            | Nm               |
| <b>Tool magazine</b>       | tool holder*           | HSK100             | HSK100             |                  |
|                            | tool capacity*         | 2 x 26             | 2 x 26             | piece            |
|                            | max. tool diameter     | 320                | 320                | mm               |
|                            | tool length            | 320                | 600                | mm               |
|                            | tool weight*           | 15/20              | 15/20              | kg               |
|                            | tool changing time     | 3.8                | 3.8                | s                |
| <b>Weight/dimensions</b>   | weight                 | 25 000             | 29 000             | kg               |
| <b>NC control</b>          | Fanuc*                 | 31i-B              | 31i-B              |                  |
| <b>* Options available</b> |                        |                    |                    |                  |
| <b>Options : HSK63</b>     | Siemens                | Sinumerik 840 D SL | Sinumerik 840 D SL |                  |
|                            | speed                  | 0-18 000           | 0-18 000           | rpm              |
|                            | power (S1/S6)          | 30/50              | 30/50              | kW               |
|                            | torque (S1/S6)         | 200/350            | 200/350            | Nm               |
|                            | tool capacity          | 2 x 34/40          | 2 x 34/40          | piece            |
|                            | tool weight            | 8/16               | 8/16               | kg               |